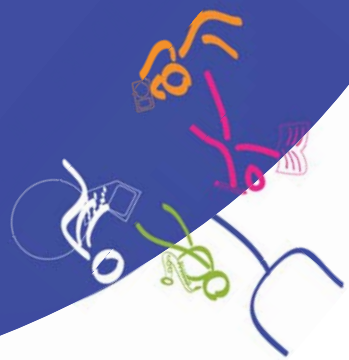


FEBRUARY 2-4, SAMOSET RESORT, ROCKPORT, ME

This is the first professional development collaboration between Maine ASCD and the Maine Support Network. This 2008 Winter Retreat will provide educators with specific, research-based strategies grounded in the extensive work of Robert J. Marzano. *What Works in Schools* is designed to offer participants research-based strategies to improve district, school and classroom practices. Strategies to support team learning during the conference will include the infusion of technology, visual learning cues, and cooperative and collaborative learning opportunities. For those interested in learning more about using graphics to reinforce learning, a full-day workshop will be offered on Monday.



HUDDLING WITH YOUR PROFESSIONAL LEARNING COMMUNITY TO EXPLORE THE ART & SCIENCE OF WHAT WORKS IN SCHOOLS

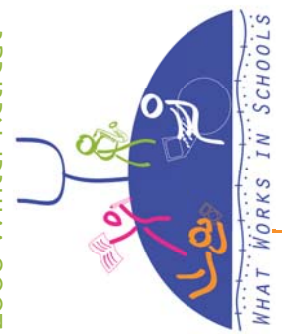
Maine ASCD and the Maine Support Network

present the 2008 Winter Retreat!



Non-Profit Org.
U.S. Postage
Standard Presort
PAID
Permit #7
Readfield, ME 04355

2008 Winter Retreat



Sponsored By:
Maine ASCD
Maine Support Network
Council for Exceptional Children,
Maine Chapter
Maine Department of Education



SUNDAY & MONDAY

What Works in Schools: Translating Research into Action with Mary McDonough

This two-day workshop will update your district or school team about the research that identifies specific things educators can do to improve the achievement of all students. Together, explore a model that relates student achievement to specific strategies that ensure all students experience dramatic gains in their learning. It is recommended that districts send teams of four or more educators. This opportunity will build your team's knowledge and understanding of the factors that have the highest potential of increasing student achievement, including;

- School-level factors, such as guaranteed and viable curriculum, clear goals, effective feedback, safe environment, and collegiality among staff members.
- Teacher-level factors, such as the use of effective instructional techniques, classroom management, and classroom curriculum design.
- Student-level factors, such as prior knowledge and motivation.

Explore a model that relates these factors to strategies that ensure students experience dramatic gains in their learning regardless of their backgrounds.

MONDAY

Communicating Powerfully Through Graphics to Enhance Student Learning: A Training Program for Educators with Michelle Boos-Stone

This training is for teachers and educators to learn powerful techniques for engaging their students in a highly effective manner, to get ideas on how to plan and prepare powerful visual lesson plans, to be purposeful about "setting the stage" for learning within the classroom, and to learn how to draw basic icons and graphics, all through the use of pictures, key words, images and color.

As a participant, you will learn;

- Learning style theories to most effectively communicate ideas.
- How to easily draw basic icons and graphics to enhance student retention.
- How to utilize the power of color in your lesson planning and in the classroom.
- How to use different types of media to engage students and maximize class participation and learning.
- How to begin to think about, plan and develop classroom lessons that will stimulate students' creativity and engage them through powerful messages in words and pictures.
- Techniques for enhancing students' memory of the content.

FEBRUARY 2ND ~ 4TH, 2008
SAMOSET RESORT
ROCKPORT, ME



Agenda

SATURDAY

10 am - 2 pm – Pre-Conference Session,
lunch included

SUNDAY

9:00 am Session

12:00 pm Lunch

1:00 pm Session

6:00 pm Tailgate Social Hour

7:00 pm Super Bowl Extravaganza Banquet &
Celebration

MONDAY

7:30 am Breakfast

8:30 am Sessions

12:00 pm Lunch

1:00 pm Sessions

4:00 pm Wrap-Up and Evaluations

Don't Miss!

Pre-Conference Session

**TIME OUT - DEVELOPING A 21ST
CENTURY GAME PLAN TO SUPPORT
STUDENT LEARNING: A TEAM APPROACH**

This session, designed for parents and educators, will examine the changes in schools, policies, and practices over the last ten years, and provide a forum to explore the ins and outs of raising a child in today's world. A panel of educators (superintendents, principals, guidance counselors, and teachers), parents of middle, high, and elementary school students, and students (recent graduates, high school and middle school) will join together to discuss the resources, strategies, and approaches available for parents, as well as the changes in school practices and policies that really support parents as partners in the schools.

CONFERENCE HIGHLIGHTS

GRAPHIC CONNECTIONS TO LEARNING

Along with our renowned presenter, Mary McDonough, we would also like to welcome Michelle Boos-Stone. Michelle will add an interesting and inspiring twist to the information being shared throughout the first day of the conference. Michelle will capture all of the information shared using pictures, key words, colors, and images to promote and support learning. On Day 2, Michelle will offer her own workshop entitled *Communicating Powerfully Through Graphics to Enhance Student Learning: A Training Program for Educators*.

SHOWCASING: WHAT WORKS IN MAINE SCHOOLS - POSTER SESSIONS



Participate in the poster session and save \$50 per registration!

Each school team is invited and encouraged to develop a poster session to share their best practices with their colleagues and peers. The poster sessions will provide the opportunity to share expertise and will be showcased at various times during our event.

TECHNO-LEARNING

We are requesting that each of you bring a laptop computer, or at least make sure that your team has one available. You will have the opportunity to connect with other educators, throughout the United States and around the world,



who are working to improve the educational opportunities for students.

2008 WINTER RETREAT HUDDLING WITH YOUR PROFESSIONAL LEARNING COMMUNITY TO EXPLORE THE ART & SCIENCE OF WHAT WORKS IN SCHOOLS

February 2-4, 2008
Samoset Resort
Rockport, ME



PRESENTERS

MARY McDONOUGH
EDUCATIONAL CONSULTANT AND
ASCD FACULTY MEMBER

Mary McDonough, an educational consultant who works with ASCD, has more than a decade of educational experience in inner-city and rural schools. Visiting and observing in more than a thousand preK-12 classrooms has provided her with practical experience for translating research into practice to improve student achievement. She has collaborated with administrators and teachers in the areas of curriculum, instruction, assessment, professional development, and supervision. Her sense of respect, awe, humor, and efficacy, regarding the challenges and opportunities facing educators today, is evident in her engaging presentation style.

MICHELLE BOOS-STONE
CORPORATE GRAPHIC RECORDER

Michelle Boos-Stone is a corporate graphic recorder and founder/principal of Gecko Graphics. Graphic recording is the unique process of transforming ideas and concepts into a powerful, highly visual, graphic format of pictures, images, words and key icons. Michelle captures the "flow" of learning sessions in real time (as a presenter or speaker is talking) in bold, colorful images to help stimulate visual learners to better follow and understand processes and to clearly see interrelationships, while synthesizing thoughts and information.



Participants have the option of attending Michelle's Day 2 workshop.

FOR MORE INFORMATION ABOUT THE WINTER RETREAT CONFERENCE PLEASE VISIT OUR WEBSITE AT WWW.MAINESUPPORTNETWORK.ORG

CONFERENCE FEES

Fees include all meals and materials

- 2 Days with *What Works in Schools*: \$325
- Day 1 *What Works in Schools*, Day 2 *Communicating Powerfully Through Graphics*: \$325
- Day 2 only - *Communicating Powerfully Through Graphics*: \$200

REGISTER ONLINE AT WWW.MAINESUPPORTNETWORK.ORG.
A PDF REGISTRATION FORM IS ALSO AVAILABLE.

LODGING AT THE SAMOSET

Rooms \$105/night single/double occupancy. Please call 1 (800) 341-1650 to make reservations. Mention that you are with the Maine Support Network.

